



Register at
www.ksdetasn.org/tod

Teacher of the Deaf Summer Immersion Experience

PROFESSIONAL DEVELOPMENT EMPOWERING TEACHERS OF THE DEAF

This week-long intensive summer immersion program will build knowledge of evidence-based practices and instructional pedagogy for working with students who are deaf/hard of hearing (DHH).

Summer 2018

Cycle A For candidates currently enrolled in the Valdosta State University TOD program and supported by the TASN TOD grant and students in other TOD teacher preparation programs that have been approved by KSD and TOD-SI.

Current teachers of the deaf are eligible to apply based on availability as candidates working on obtaining an endorsement as a TOD are given first preference. Topics include:

- > **History of Deaf Education**
- > **Deaf Ed Law**
- > **Cultural Awareness**
- > **Neurocognitive Research**
- > **How Deaf Children Learn**
- > **Bilingual Education for DHH Students**

TOD-SI Schedule 2018

Sunday, June 10	7:00 pm	Registration & Orientation
Monday, June 11—Thursday, June 14	8:00 am—4:00 pm	Coursework
	7:00—8:30 pm	Enhanced Learning
Friday, June 15	9:00 am—12:30 pm	Coursework
	12:30 pm	Dismissal

For more information, contact:

Sarah Cramm

scramm@kssdb.org

(913) 210-8112

REGISTRATION INFO

▶ JUNE 10-15, 2018

▶ KANSAS SCHOOL FOR THE DEAF
450 E. PARK
OLATHE, KS 66061
WWW.KSDEAF.ORG

Classes will take place at the Kansas School for the Deaf.

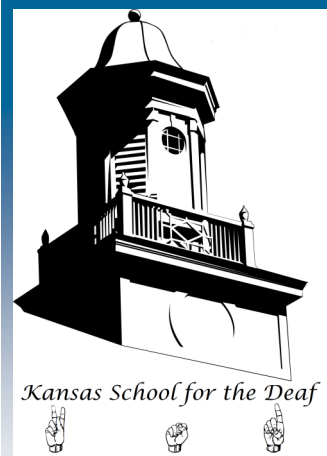
Room and Board are available on campus.

Tuition, room/board, and travel stipend are reimbursable pending available grant funds.

Participants should bring a laptop and basic supplies typically needed when taking a class.

Professional materials and resources will be provided.

Register at www.ksdetasn.org/tod



The contents of this resource were developed under an agreement from the Federal Department of Education to the Kansas State Department of Education. However, the contents do not necessarily represent the policy of the Department of Education, and endorsement by the Kansas State Department of Education or the Federal Government should not be assumed. Teacher of the Deaf Endorsement & Professional Development Project is funded through Part B funds administered by the Kansas State Department of Education's Early Childhood, Special Education and Title Services. The Kansas School for the Deaf (KSD) is an equal employment and educational opportunity school. For inquiries regarding the non-discrimination policy, please contact: KSD, 450 E. Park, Olathe, KS 66061, (913) 210-8111.