

Resource----- **Back to School Packet** -----for Teachers

**What
is it**



A packet providing:

- class, school, and district information to families
- tools to engage families
- a system for home-school communication
- social supports for students

**Who
uses it**



The teacher:

- shares with families
- supports students
- engages families
- builds relationships with families & students

**When
to use it**



Back to school:

- conferences
- home visits
- meet & greets
- family nights

**Why you
use it**



The purpose:

- To build relationships with families and students
- To share information and expectations with families and students
- To ease any anxiety or nervousness the family or student might have
- To help prepare the families and students for the new school year
- To provide a work system for home-school communication

**What
the research
says**



"The evidence is consistent, positive, and convincing: families have a major influence on their children's achievement in school & through life...The research continues to grow & build an ever-strengthening case. When schools, families, and community groups work together to support learning, children tend to do better in school, stay in school longer, and like school more."

Henderson, A., Mapp, K. Johnson, V. & Davies, D. (2007). *Beyond the Bake Sale: The Essential Guide to Family-School Partnerships*. New York, NY: The New York Press.

**Part 1
Information for Families**

**Part 2
Information for the
Teacher**

**Part 3
Home-School Binder**

**Part 4
Student Supports**

How to use this packet:

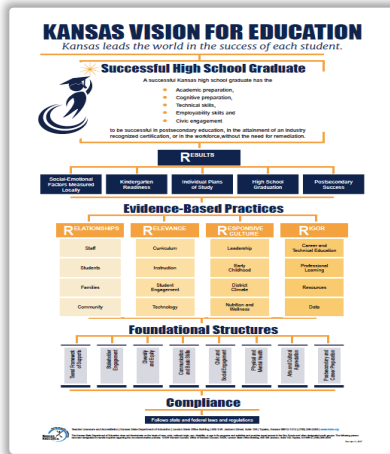
You may choose to use this packet "as is" or you may "pick and choose" the parts that are useful to you and add them to supports you already use. What you should know:

- Each section is color-coded so you can differentiate between the sections.
- This packet is editable. You can delete photos or clipart and add your own, or choose not to use any at all.





Family Engagement Resources



Relationships with families are one of the evidence-based practices identified by the Kansas Board of Education as critical to student success. Below are additional resources educators can consider as they collaborate with and support their student's families.

Articles:

- Division of Early Childhood Recommended Practices document pages 10-11
<https://divisionearlychildhood.egnyc.com/dl/tgv6GUXhVo>
- Join us on the Journey: What Families Want and Need from Service Providers http://barryprizant.com/wp-content/uploads/2015/07/asq16_join_us_on_the_journey_winter_2011.pdf

Books:

- Beyond the Bake Sale: The Essential Guide to Family/School Partnerships https://www.amazon.com/Beyond-Bake-Sale-Essential-Partnerships/dp/1565848888/ref=sr_1_1?ie=UTF8&qid=1547147903&sr=8-

1&keywords=beyond+the+bake+sale+the+essential+guide+to+school+partnerships

- Home, School, and Community Collaboration: Culturally Responsive Family Engagement
https://www.amazon.com/Home-School-Community-Collaboration-Culturally/dp/1506365736/ref=sr_1_1_sspa?ie=UTF8&qid=1547143720&sr=8-1-spons&keywords=family+engagement+in+schools&psc=1
- High Leverage Practices for Inclusive Classrooms
https://www.amazon.com/High-Leverage-Practices-Inclusive-Classrooms/dp/1138039187/ref=sr_1_1?ie=UTF8&qid=1547144464&sr=8-1&keywords=high+leverage+practices+for+inclusive+classrooms
- Involving Parents of Students with Special Needs: 25 Ready to Use Strategies https://www.amazon.com/Involving-Parents-Students-Special-Ready/dp/1634507800/ref=dp_ob_title_bk

Websites:

- Families Together <https://famielstogetherinc.org>
- Kansas Parent Information Resource Center
<https://www.ksdetasn.org/kpirc/kansas-parent-information-resource-center>
- The University of Kansas Beach Center on Disability
<https://beachcenter.lsi.ku.edu/beach-families>



Autism, Evidence-Based Practices, and Social Competency Resources

Autism:

- Autism Speaks <https://www.autismspeaks.org/>
- Organization for Autism Research <https://researchautism.org>

Evidence-Based Practices

- Autism Internet Modules www.autisminternetmodules.org
- National Professional Development Center on Autism Spectrum Disorder <https://autismpdc.fpg.unc.edu/national-professional-development-center-autism-spectrum-disorder>

Social Competencies:

- KSDE TASN Social Competencies resources <https://www.ksdetasn.org/atbs/social-competencies>
- The New Social Story Book, Revised and Expanded 15th Anniversary Edition: Over 150 Social Stories that Teach Everyday Social Skills to Children and Adults with Autism and Their Peers https://www.amazon.com/Social-Story-Revised-Expanded-Anniversary/dp/1941765165/ref=sr_1_1?ie=UTF8&qid=1547146921&sr=8-1&keywords=the+new+social+story+book
- Power Cards: Using Special Interests to Motivate Children and Youth with Asperger Syndrome and Autism https://www.amazon.com/Power-Card-Strategy-2-0-Interests/dp/1942197268/ref=sr_1_2?ie=UTF8&qid=1547146872&sr=8-2&keywords=Power+Cards

TASN Autism and Tertiary Behavior Supports is funded through Part B funds administered by the Kansas State Department of Education's Early Childhood, Special Education and Title Services. TASN Autism and Tertiary Behavior Supports does not discriminate on the basis of race, color, national origin, sex, disability, or age in its programs and activities. The following person has been designated to handle inquiries regarding the non-discrimination policies: Deputy Director, Keystone Learning Services, 500 E. Sunflower, Ozawie, KS 66070, [785-876-2214](tel:785-876-2214)